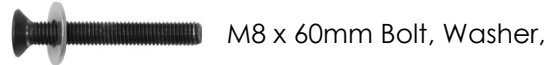


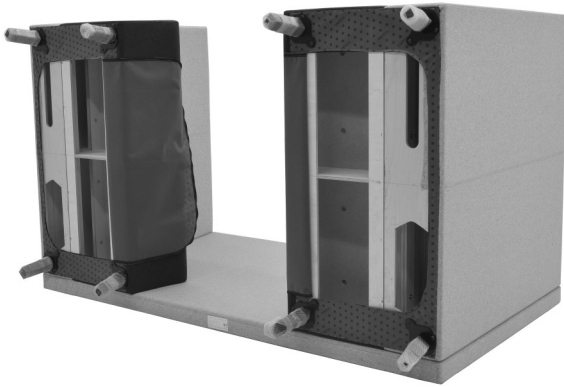
### Step 1

Unzip the bottom cloth and line up the holes in the Seats Units with the inserts in the Panel.

#### Fixings supplied:

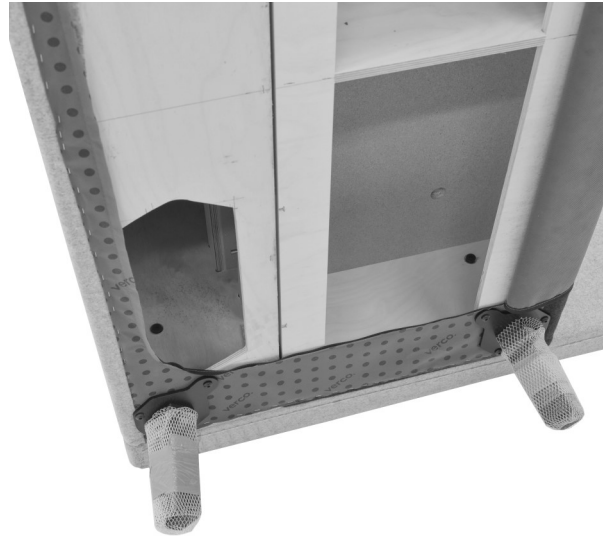


8No. Fixings supplied to secure Seats to Panel.



### Step 2

Loosely locate the bolts into the inserts. Tighten the upper bolt in the back first. Tighten all fixings, securing the Seat Units in place. Repeat for other side.



### Step 3

Carefully Tip the Panel and two Seat Units onto the feet.



## EVETTE PANEL INSTALLATION INSTRUCTIONS

# verco.

Chapel Lane, High Wycombe, Buckinghamshire HP12 4BG

t: +44 (0) 1494 448000 w: verco.co.uk

DOC ID: AI\_0017