

## OBLIQUE ADAPT SPACER FOR SINGLE BENCH

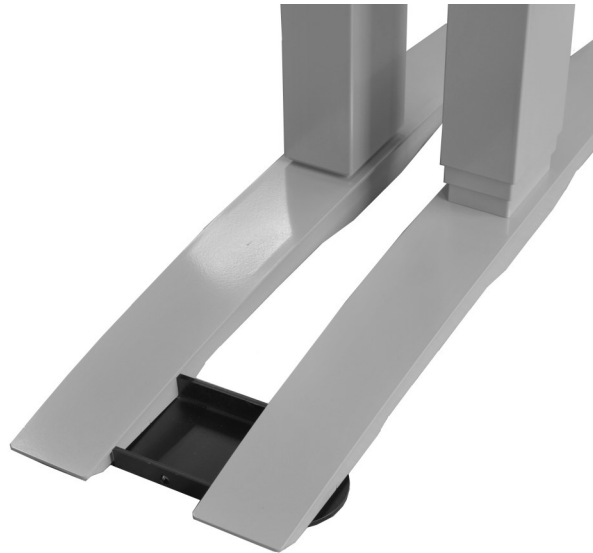
1. Spacer Brackets are provided for Oblique Adapt Desks to allow suitable positioning of multiple desks adjacent to each other.



2. The Spacer Bracket is placed on the floor under the desk frame as shown.



3. The circular aperture on the Spacer Bracket aligns with the circular foot on the frame holding it in position on the floor.



4. The adjacent desk is then located in the same way, with the circular foot (on the underside of the frame) locating over the Spacer Bracket creating a suitable distance apart.

## OBLIQUE ADAPT SPACER FOR SINGLE DESK: BENCH ARRANGEMENT (OPTIONAL)

5. Upon request, we can offer an alternative Spacer Bracket that allows multiple desks to be positioned.



6. The Spacer Bracket is positioned on one of the back feet of the frame.

Two Spacer Brackets are linked with a connection bar to allow the configuration of four single desks, consisting of adjacent and back to back desks to form a bench.

# verco.

High Wycombe  
+44 (0) 1494 448000  
info@verco.co.uk

London  
+44 (0) 2074 040428  
www.verco.co.uk