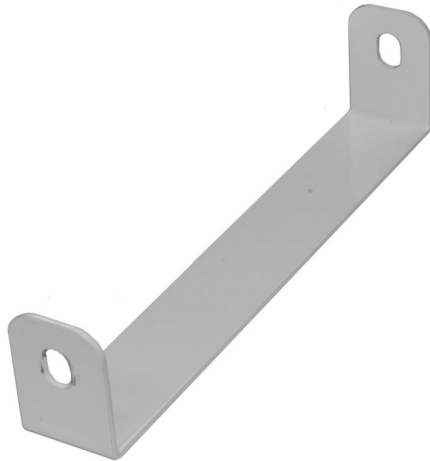


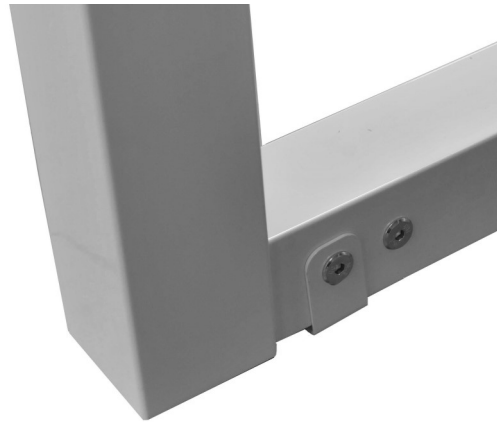
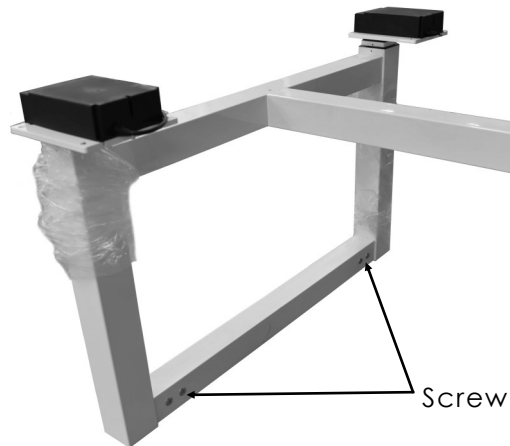
step 1

Two Spacer Brackets are provided for Oblique Adapt Back to Back Bench to provide a safe distance between adjacent bench modules.



step 2

The Spacer Bracket is placed on the floor under the leg frame and secured using the screws located on the cross rail.



step 3

One of the screws is taken off to allow the Spacer to be located and then the screw replaced with the bracket in place.



step 4

Both spacers are fixed to the frame ready to be secured to the adjacent bench.



step 5

The Spacer is secured on the adjacent leg frame in the same way creating a fixed distance between the two benches.



**OBLIQUE ADAPT BACK TO BACK
SPACER BRACKET**

verco.

High Wycombe
+44 (0) 1494 448000
info@verco.co.uk

London
+44 (0) 2074 040428
www.verco.co.uk