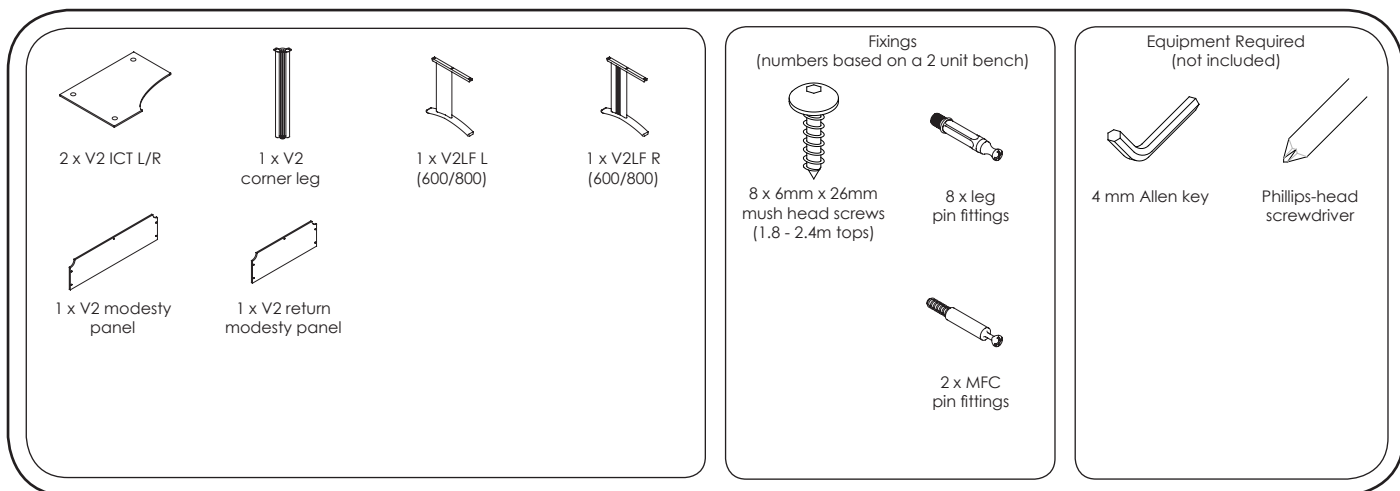




Visual Two free standing crescent desks

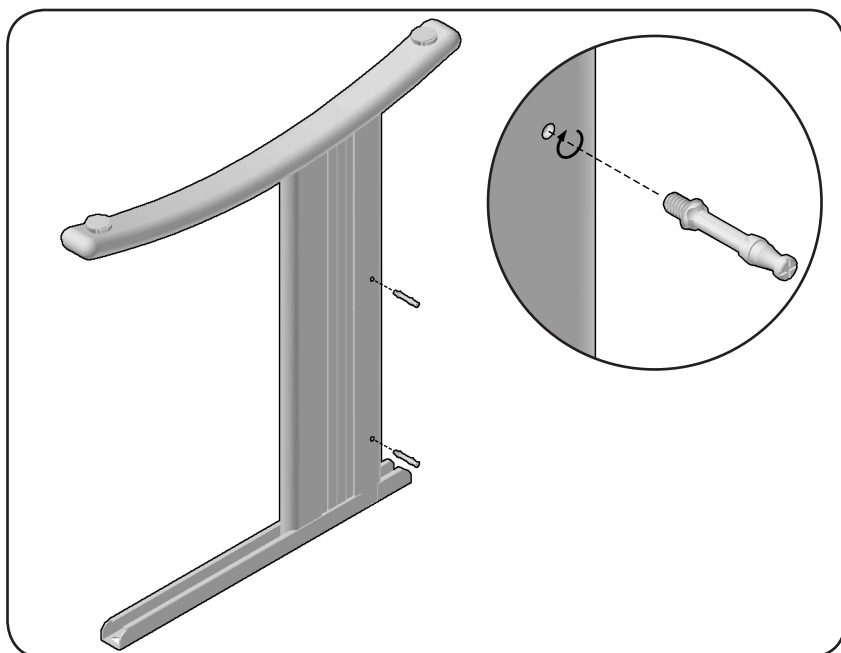
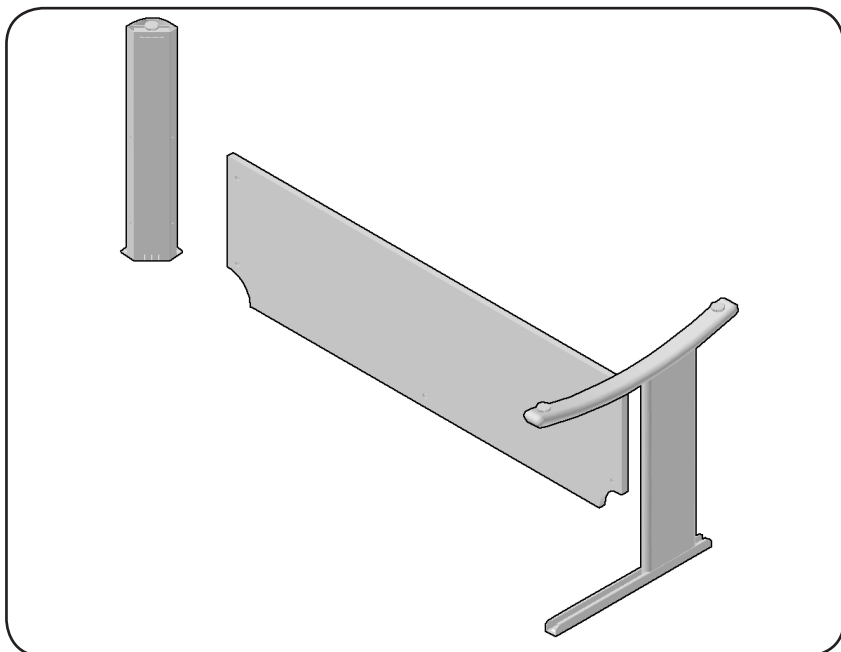
Visual Two desking

V2 ICD 1612/1812 (left or right)



You will assemble the desk in an inverted position and then flip it the right way up once complete. This makes it easier to access the fittings as it's constructed. Before starting check you have all the items listed above including the equipment required.

Arrange the large leg, corner leg and modesty panel in the layout shown here, with the flat section of the leg closest to the floor and the holes in the modesty panel facing along the longer side of the leg. The cutouts in the panel should sit at its base next to the flat sections of the legs. You may lay the components down until they are needed. The desk shown here is right handed, a left handed desk will be the inverse of this diagram.

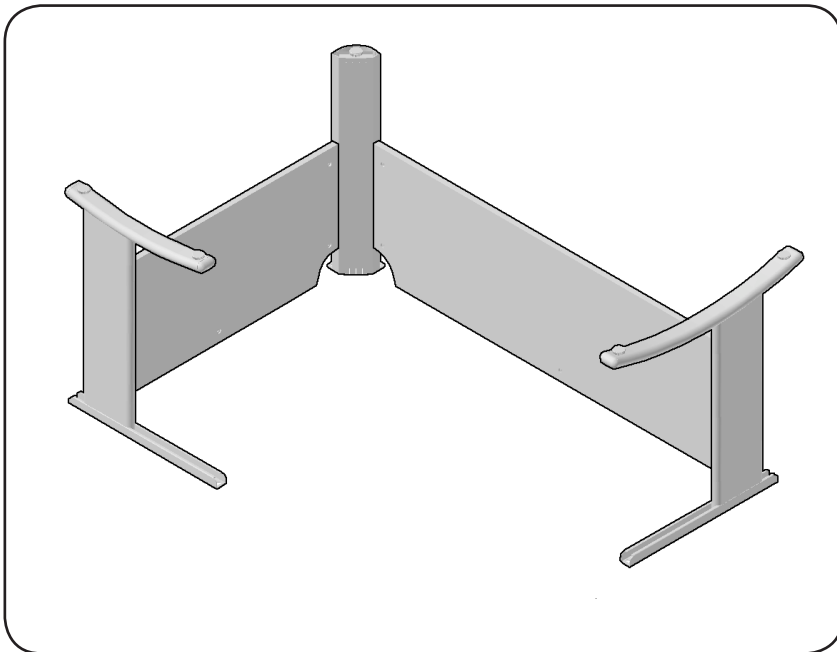
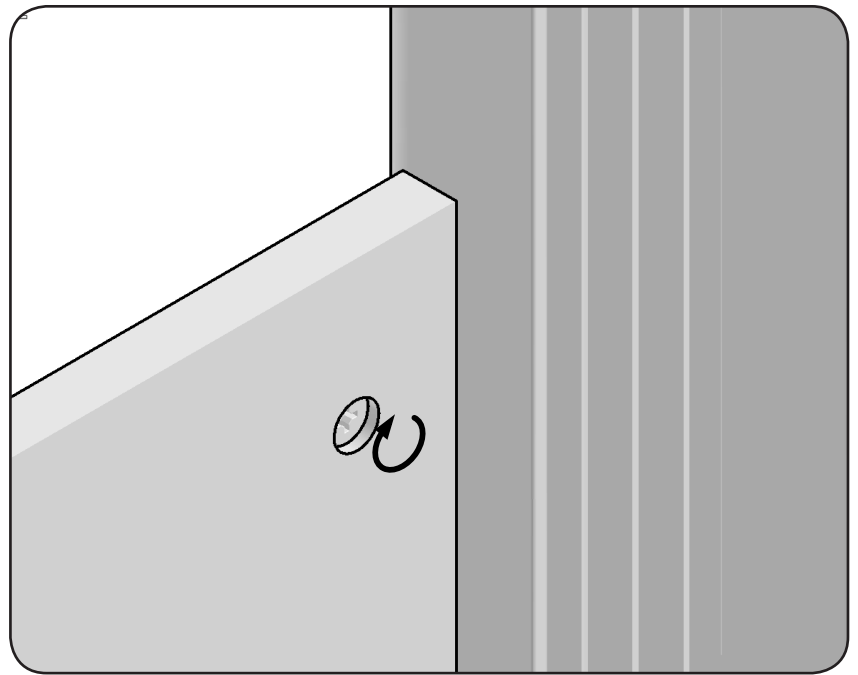


Take the cantilever leg and locate the two threaded holes in the upright section, these holes sit on the inside of the leg on the assembled desk. Take two of the leg pins from the fittings bag and screw them into the holes using a Phillips head screwdriver to fully tighten them.

Repeat the same process with the corner post leg, ensuring the remaining holes are positioned to attach to the return modesty panel. The round section of the leg should be positioned to sit on the outside of the modesty panels.

Turn the barrel fixings in the modesty panel so that the small arrows on their faces are pointing directly away from the edge of the panel. This should allow you to fit the pins into the holes on the ends of the panels.

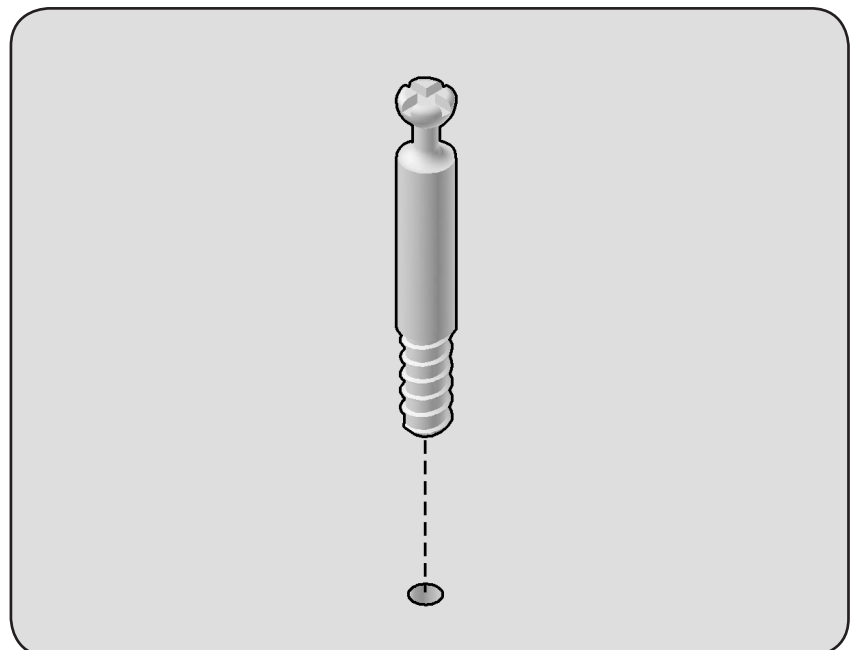
Once the panel is fully butted up to the leg, turn the barrel fitting clockwise through 180 degrees or until it stops turning freely using a Phillips head screwdriver. This should pull the panel tight up against the leg once both fittings are tightened.

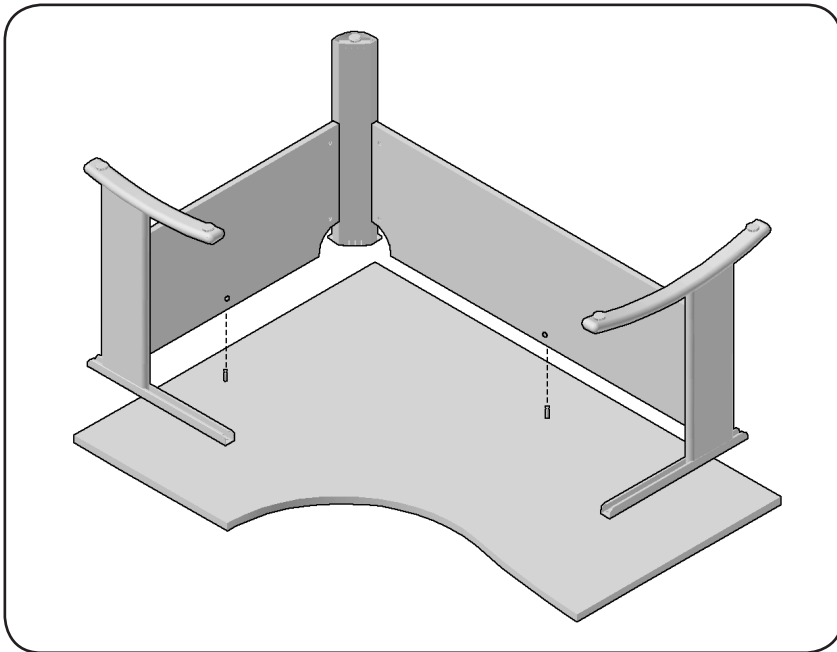


Repeat with the post leg at the other end of the modesty panel, and then again with the remaining modesty panel and leg. Your desk so far should look like this.

Place your top, up-side down on a protective surface such as the box that it came in. Locate the two holes in the underside of the desk top, about 10cm and 18cm in from the middle of the return side and the front side of the desk top respectively. Take the two MFC pins and screw these into the pilot holes.

Ensure the barrel fixings in the centre of the modesty panels have the arrows on their front surface pointing upwards and away from the closest edge.

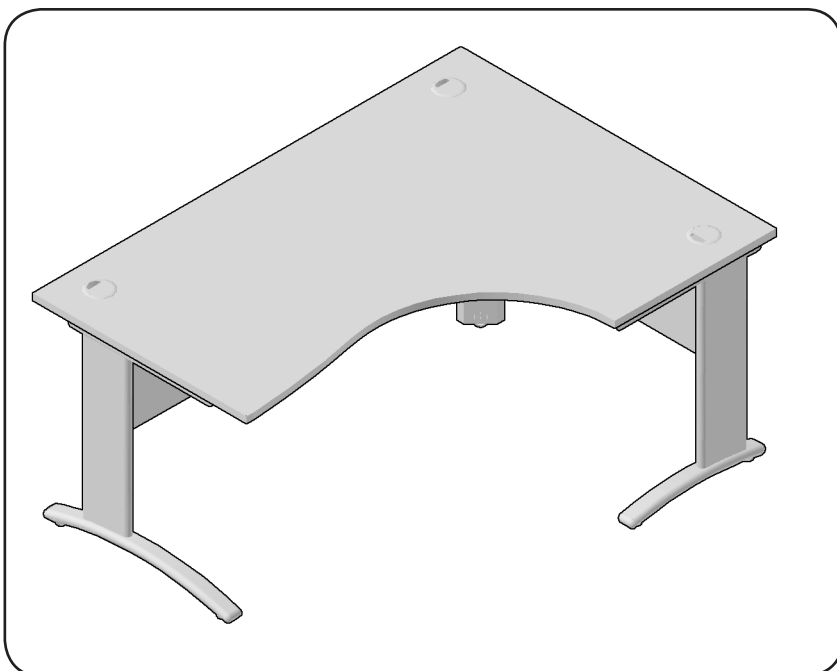
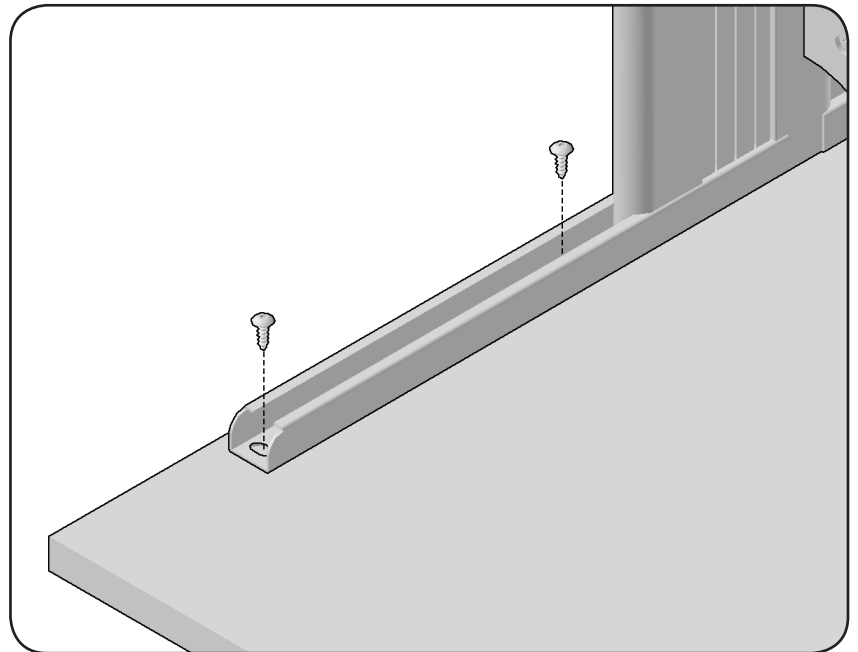




Carefully place the leg and modesty panel construction down onto the top, locating the pin in the top into the hole in the centre of the modesty panel (this will be facing downwards) being careful not to twist the legs away from being perpendicular to the modesty panel. This stage is best done with the help of another person.

If you are setting up the desk single handed place the legs and modesty panels on the top with the pins just behind the centre of the modesty panels. Then lift the modesty panel slightly off the top and by eye position it over the pins and fit over it. Secure the fitting by turning the barrel clockwise as with the previous ones.

Fix the legs in place by screwing the mushroom head screws through the holes in the legs and into the pilot holes in the top. There should be 3 in each cantilever leg and two in the corner leg. Ensure these are full tightened without over tightening them.



Your desk is complete, with the aid of another person, turn the desk over so it's the right way up. Place the desk in its desired position. Fine tune how it sits on the floor by screwing in or unscrewing the adjustable feet on the bottom of the legs.

Your completed desks should resemble the illustration on the left.